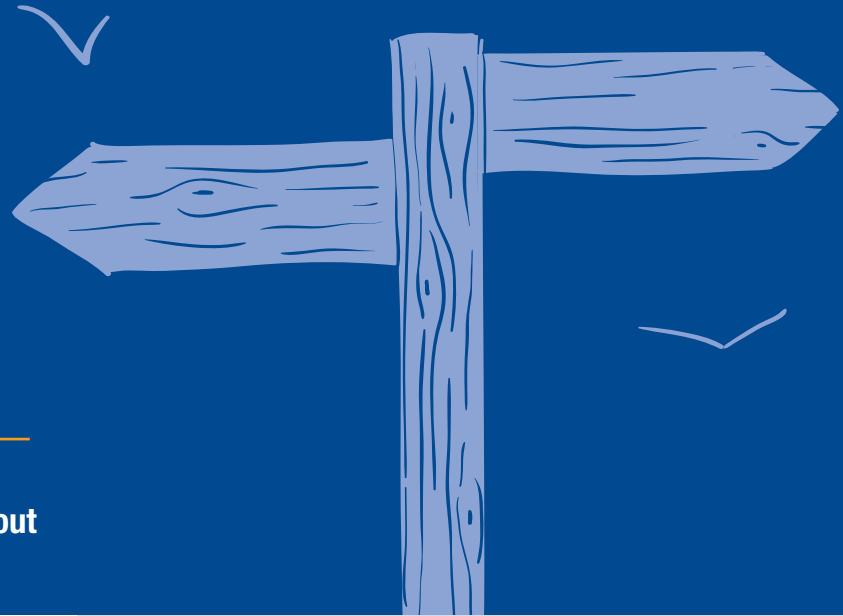


Level 2

Award in Understanding the Delivery of an NHS Health Check



This qualification will equip learners with the skills and understanding to confidently carry out an NHS Health Check assessment.

WHO NEEDS THIS QUALIFICATION?

- Healthcare professionals who deliver the NHS Health Check Programme
- Healthcare Assistants and nurses
- People responsible for health checks for patients between the ages of 40 - 74

WHY RSPH?

RSPH is the UK's leading independent OFQUAL regulated awarding body for public health qualifications.

HOW IS THIS QUALIFICATION ASSESSED?

Candidates will be assessed by a multiple-choice examination which includes questions on a case study.

WHAT DOES THIS QUALIFICATION COVER?

- The importance of health checks
- The risk factors associated with cardiovascular diseases
- Legal, ethical and professional requirements for carrying out an NHS Health Check
- How an NHS Health Check should be conducted
- What health risks an NHS Health Check can identify
- Methods to communicate the risk of cardiovascular disease to patients



Guided Learning time:
7 hours

Total qualification time:
8 hours

1 unit

