

DIAGNOSTIC AND THERAPEUTIC RADIOGRAPHERS

Role in PUBLIC HEALTH



Health Protection

We are experts at protecting people from excess radiation and other hazards such as strong magnetic fields.

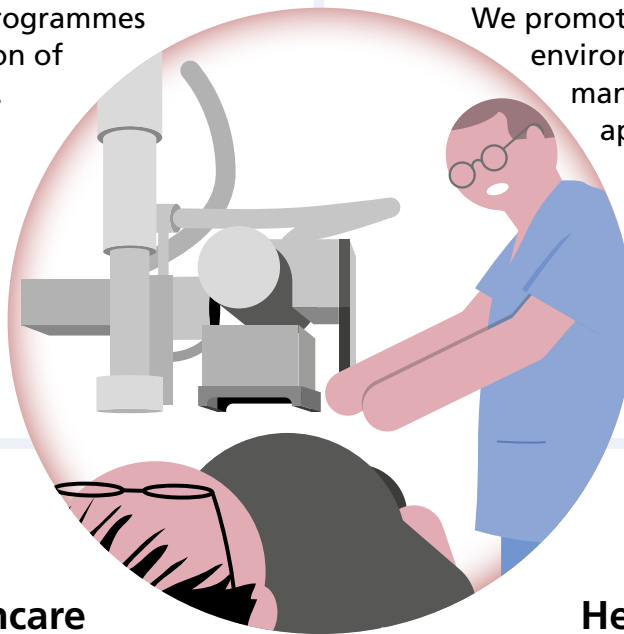
We provide screening programmes to support early detection of major health conditions.

Wider Determinants



We support people with cancer in maintaining or resuming their employment or education.

We promote a sustainable environment by efficiently managing resources and appointment schedules.



Population Healthcare

We are increasing access to early diagnoses for groups who may struggle to get healthcare services.

We use social media to improve awareness and uptake of screening programmes.

We minimise the impact of radiation exposure on the population by optimising radiation doses.



Health Improvement

We apply Making Every Contact Count (MECC) in our daily work e.g. smoking cessation, mental health.

We work with other healthcare professionals to enhance health outcomes e.g. rapid access to stroke imaging, research trials.



Examples of settings

We work across the life course, in a range of settings.



RSPH
ROYAL SOCIETY FOR PUBLIC HEALTH
VISION, VOICE AND PRACTICE