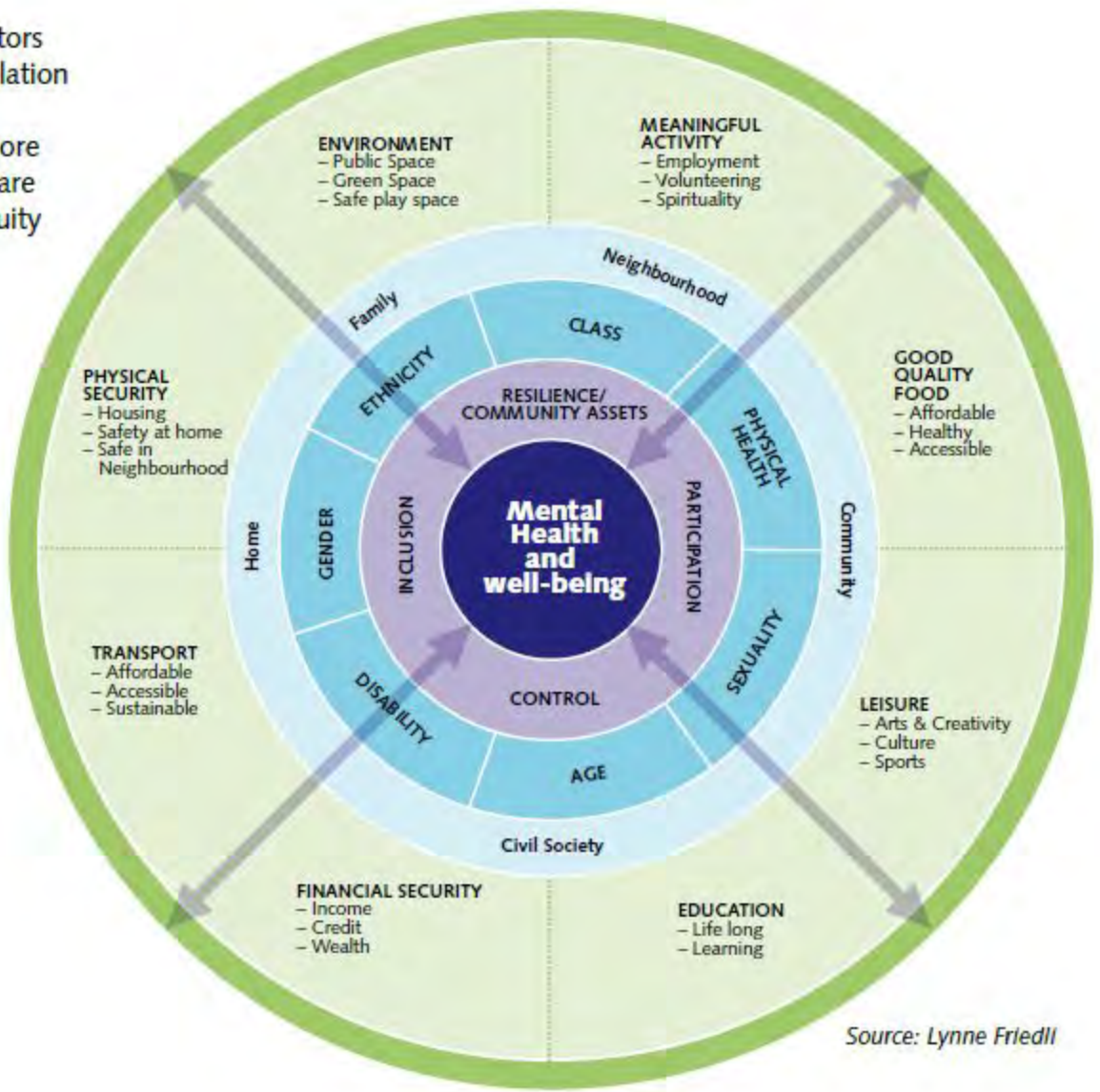


Figure 2.2: A dynamic model of mental well-being for assessing mental well-being impact

The four protective factors are influenced by population characteristics, wider determinants and the core economy. All of which are influenced by levels equity and social justice.



Source: Lynne Friedli

Equity and social justice

Wider determinants

Social relationships and the core economy

Population characteristics

Four protective factors

Lynne Friedli  
MWIA Collaborative  
April 2009